

**2.0**

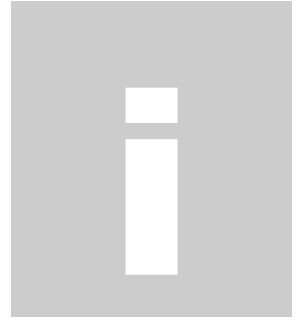
## **USB 2.0 FLASH DRIVE**

---

# **User's Guide & Manual**

# Index

<b>Introduction</b>	<b>1</b>
 <b>C H A P T E R 1</b>	
<b>Features</b>	<b>2</b>
 <b>C H A P T E R 2</b>	
<b>System Requirements</b>	<b>3</b>
 <b>C H A P T E R 3</b>	
<b>Getting Started</b>	
<b>Installation of the Windows 98SE Driver</b>	<b>4</b>
 <b>C H A P T E R 4</b>	
<b>Additional Functions</b>	<b>7</b>



## Introduction

Congratulations on your purchase of this USB 2.0 Flash Drive! The USB 2.0 Flash Drive is a Hi-Speed USB 2.0 compliant device and is recommended that you plug it into a Hi-Speed USB 2.0 port. This USB 2.0 Flash Drive is your friendly, secure, and lightweight removable mass storage device disk. It plugs thru the USB port so your computer will quickly detect and configure the disk without needing to restart the computer. Just the same way as you use a disk drive.

This USB 2.0 Flash Drive is so light and compact that you can carry it with you anywhere. It is so easy to install that you can actually use it to replace your floppy diskettes, ZIP drives, MO drives, and even CD-RW discs. And because it uses durable solid-state storage flash memory, it has no moving parts inside that makes it shock resistant and longer to use.

This USB 2.0 Flash Drive even provides great flexibility and data security with disk partitioning and password security features. It allows you to easily create and configure one or two partition drives – an open partition drive with no password and a secured partition drive with password access option. The secured partition drive allows you to place your important files in it and protect it from being accessed by setting a password to lock the drive. Any access to this secured partition drive then would require first to enter the correct password to unlock the drive.



# Features

## Features

- USB Interface  
High-speed USB 2.0 interface; backward compatible with USB 1.1
- NAND Flash Interface  
Supports all major Samsung and Toshiba NAND flash memories from 128Mb to 4 GB
- Fastest data transfer rate on the market
- Disk partitions and password check for security disk
- PC boot up as USB Zip Disk and USB Hard Disk

## Certification

- CE.
- USB2.0 Logo

## LED Indication

- LED indicator to show access status  
Three modes: Blink rapidly: Busy  
Blink slowly: waiting  
Light off

## System Requirements

**Memory:** 32 MB, > 64 MB recommended

**Free Hard Disk Space :** 3 MB above

**Slot:** USB-port (USB 1.1/2.0)

**Operating System:** Microsoft Windows® 98 / 98SE / ME

Microsoft Windows® 2000 / XP

Mac OS 9.0 or higher

Linux OS 2.4 or higher

**Driver:** Required only for Windows® 98 / 98SE

# 3

## Getting Started

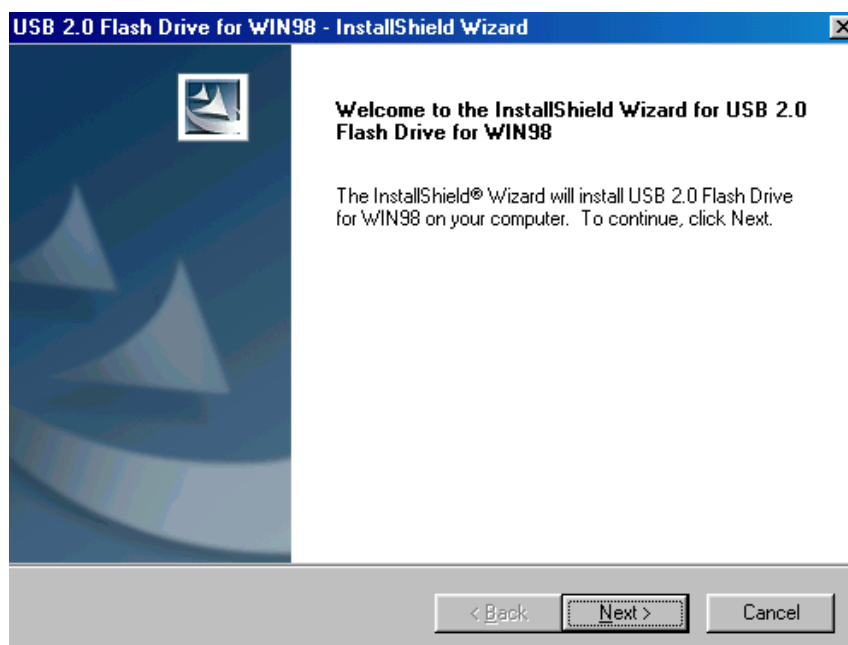
Here the installation under Windows® 98 / 98SE is explained. Only in this case the installation of a driver is required. All other operating systems support the USB 2.0 Flash Drive without an additional driver.

### INSTALLATION OF THE WINDOWS® 98SE DRIVER

If you use Windows® ME, 2000 or XP **you do not need a driver**. Continue with the section “Connecting”.

**Attention!** During the installation of software, important data can be overwritten and changed. In order to retrieve original data when problems after installation should occur, you should create a back up of the hard drive prior to installation.

1. Insert the accompanying CD and then click on **Win98Driver.exe** before connect USB 2.0 Flash Drive to the computer.

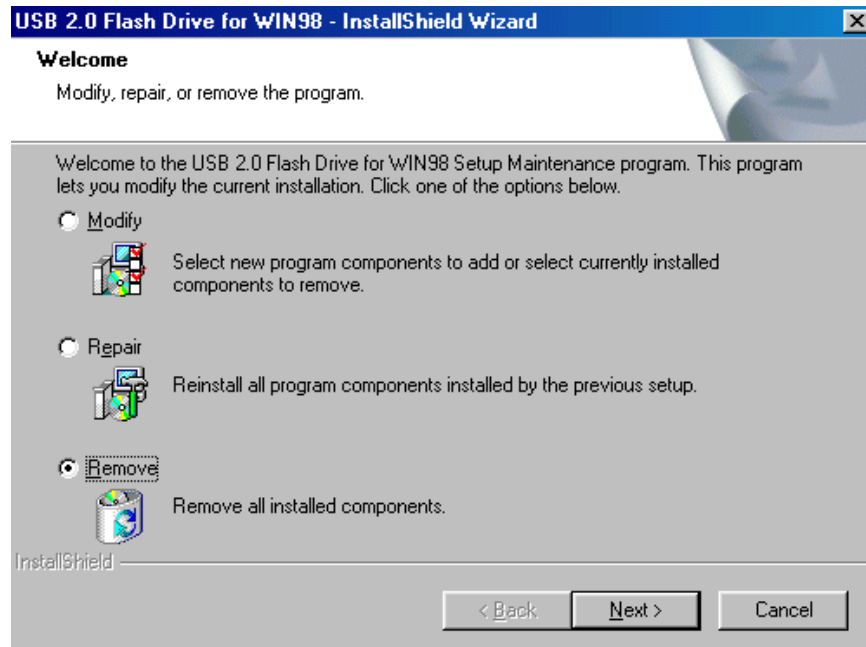


2. After click on “Next” button to finish installation, the connected USB 2.0 Flash Drive will be available.

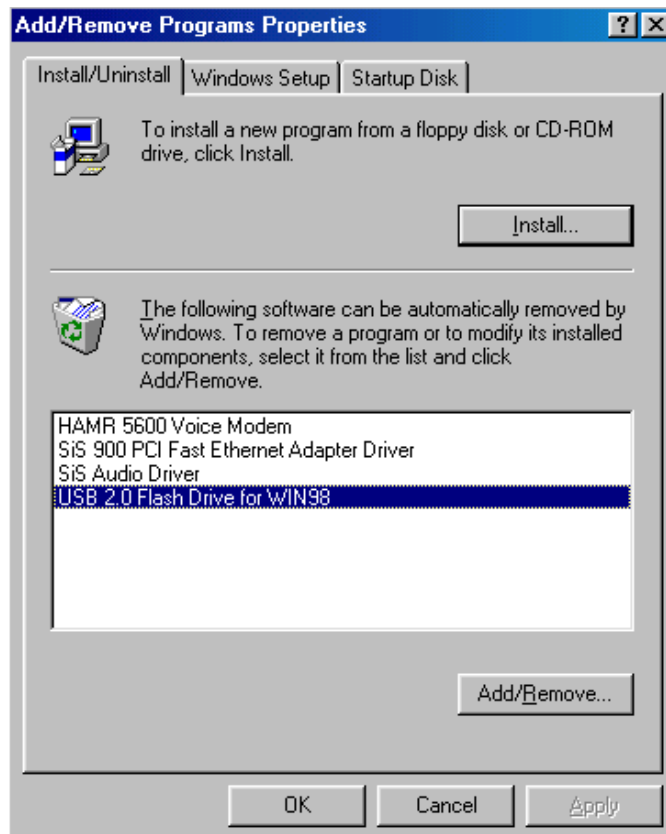
## REMOVING THE WINDOWS® 98SE DRIVER

There are two methods of removing driver:

1. Click on **Win98Driver.exe** in the CD-ROM and choose “**Remove**” icon, then follow the instruction to accomplish removing driver.



2. Click on “**Add/Remove**” icon in Control Panel, then choose “**USB 2.0 Flash Drive for 98**” with a click on “**Add/Remove**” button to accomplish removing drive.



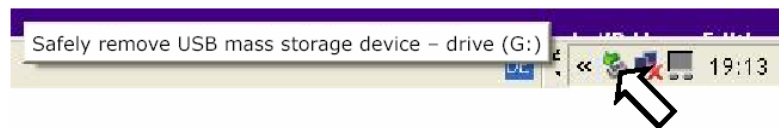
## CONNECTING

1. Remove the protective cover of the USB 2.0 Flash Drive and connect the device with an available USB port.
2. The USB2.0 Flash Drive will be recognized and the operating system assigns the letter of an empty drive. Now you can use the device like a diskette drive (copy data, delete, etc.).

## REMOVING USB 2.0 Flash Drive

Under Windows® 98 / 98SE it is easy to remove the device from the USB connection, as long as data are not accessed. With Windows® ME / 2000 / XP it may be necessary to **sign off the device**.

The installed USB 2.0 Flash Drive is displayed in the taskbar:



1. Right click with the mouse **"Unplug or Eject Hardware"** and choose the appropriate entry.
2. The instruction for device removal will follow:





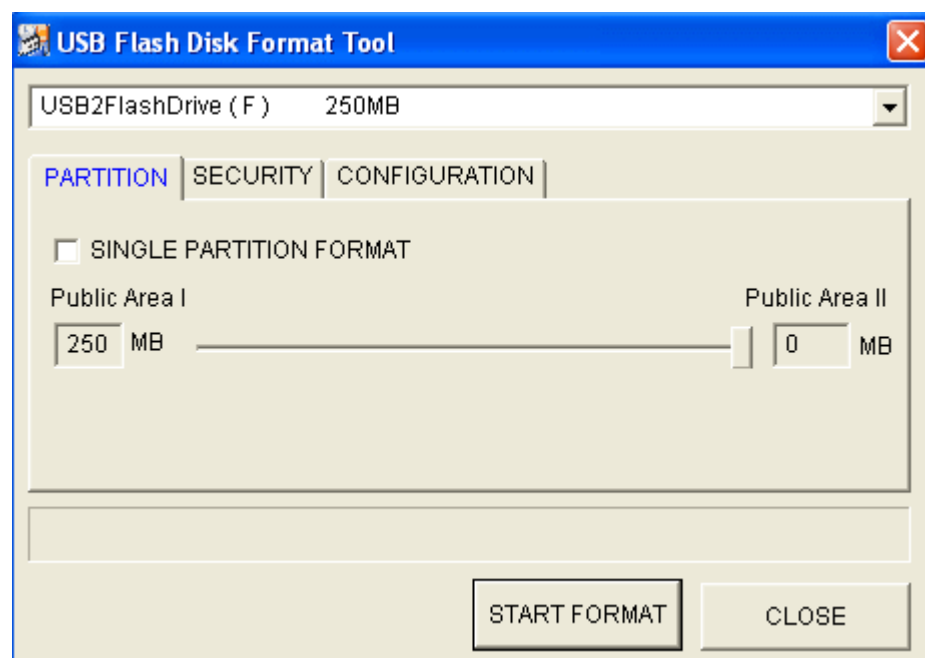
## Additional Functions

Please insert the accompanying CD-ROM and then double click **Setup.exe** in the Utility folder in the CD-ROM. The Utility contains two programs: **FORMAT.exe** and **LOCK.exe**. The first one is used to format/partition the USB flash disk and the latter one to login to perform security disk function. After users running **Setup.exe**, the program will create three shortcuts in the **USB 2.0 Flash Utility** fold in the Start Menu named **Format**, **LOCK**, and **Manual..**



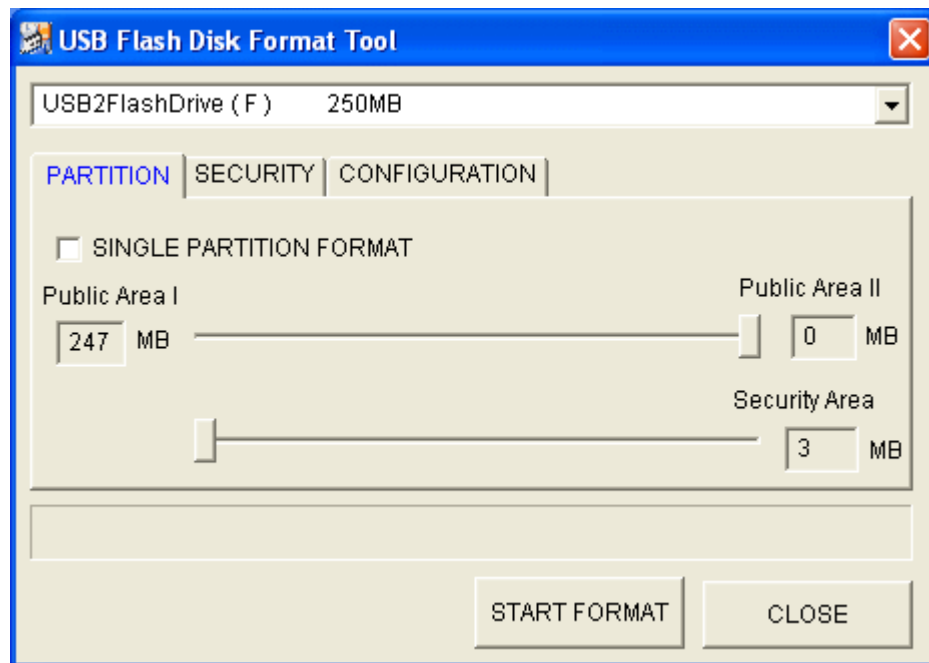
### FORMAT Interface

#### A. Partition function



1. **USB Flash Disk Profile:** shows Vender Name, Product Name, assigned Drive letter, and Disk capacity of this USB Flash Disk.
2. **Public Area II:** shows assigned disk capacity of Public Area II.
3. **Public Area I:** shows assigned disk capacity of Public Area I. The minimum capacity of this area is 4MB.
4. **Capacity Scroll Bar:** users can drag the scroll bar to adjust the capacity between Public Area I and II.

5. **Capacity Status Bar**: reflects the capacity of Public Area I and II by blue and green bar.
6. **Format Progress Percentage**: shows the progress of formatting disk by percentage.
7. **Format Progress Status Bar**: shows the progress of formatting disk by status bar.
8. **START FORMAT**: click the Button to start disk format.
9. **CLOSE**: click the Button to exit program.
10. **PARTITION**: click the Button to select PARTITION function.
11. **SECURITY**: click Button to select SECURITY function.
12. **CONFIGURATION**: click the Button to select setting Disk CONFIGURATION.
13. **SINGLE PARTITION FORMAT**: After selecting the check box, users be able to back to the manufacture set configuration by clicking **START FORMAT**.

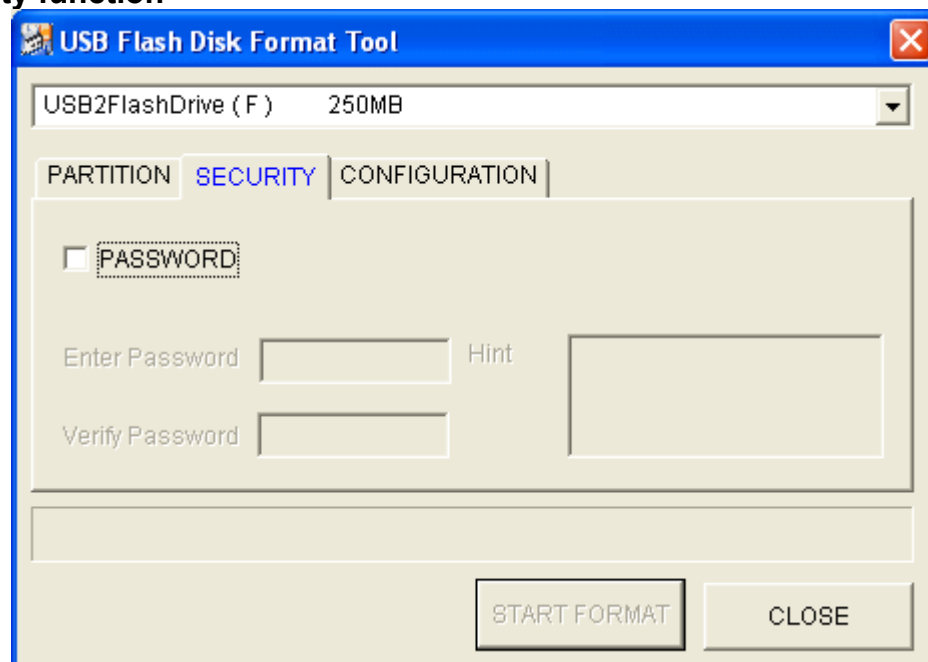


14. **Security Area Capacity Scroll Bar**: users can drag the scroll bar to adjust the capacity of Security Area. Minimum capacity of Security Area is 1MB.
15. **Security Area Capacity Status Bar**: reflects the capacity of Security Area by red color bar.
16. **Security Area**: shows assigned disk capacity of Security Area.

**Note:**

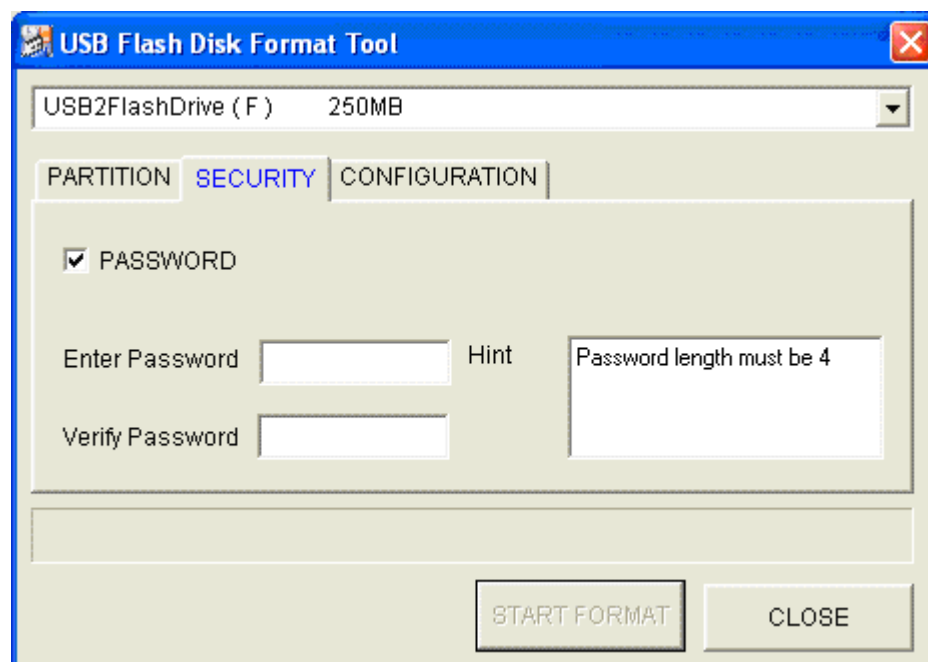
- I. Only after setting password in SECURITY function (see section B), the display window of 13, 14, and 15 shows up.
- II. Users can adjust the capacities of Public Area I, II and Security Area by dragging the related scroll bar. The minimum disk capacity of Security Area is 1MB and minimum disk capacity of Public Area I is 4MB. There is no capacity limitation of Public Area II.

## B. Security function



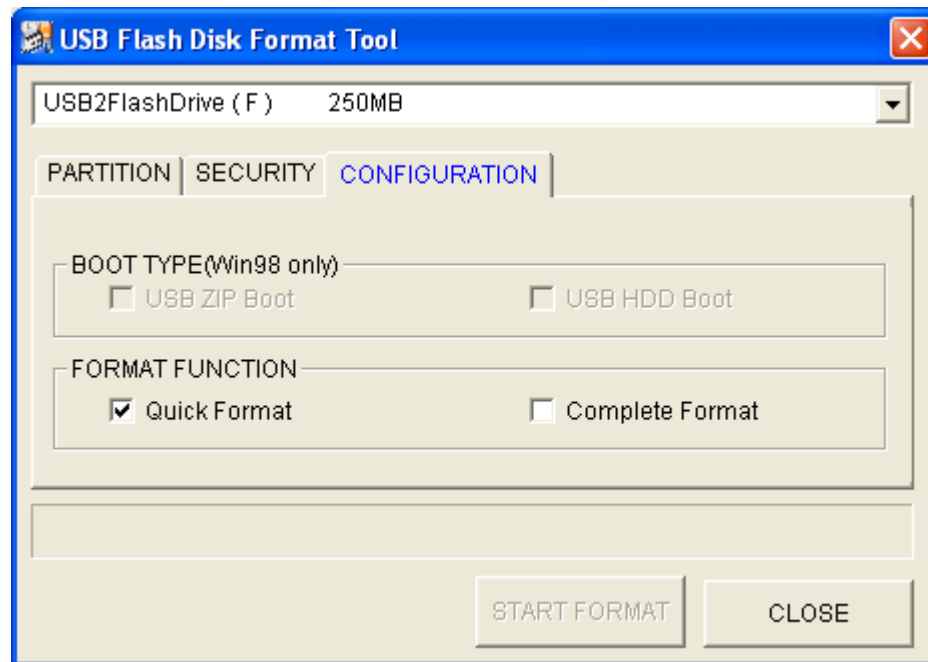
The screenshot shows the 'USB Flash Disk Format Tool' window. At the top, a dropdown menu displays 'USB2FlashDrive ( F )' and '250MB'. Below this are three tabs: 'PARTITION', 'SECURITY' (which is selected and highlighted in blue), and 'CONFIGURATION'. In the 'SECURITY' tab, there is a checkbox labeled 'PASSWORD' which is currently unchecked. Below the checkbox are three input fields: 'Enter Password', 'Hint', and 'Verify Password'. The 'Enter Password' and 'Verify Password' fields are empty, while the 'Hint' field is also empty. At the bottom right of the window are two buttons: 'START FORMAT' and 'CLOSE'.

17. **PASSWORD:** After users select the check box of PASSWORD, the display window of **Enter Password**, **Verify Password**, and **Hint** become valid to edit. Users can type up to 4 characters used as password. Hint area is used to remind users the password and can be typed up to 32 characters. Only after finishing the password edit, users can then set and utilize the Security Area. (Display window of 13, 14, and 15.)



This screenshot shows the same 'USB Flash Disk Format Tool' window, but the 'PASSWORD' checkbox is now checked. The 'Enter Password' and 'Verify Password' fields are still empty. The 'Hint' field now contains the text 'Password length must be 4'. The 'START FORMAT' and 'CLOSE' buttons remain at the bottom right.

### C. Disk Configuration



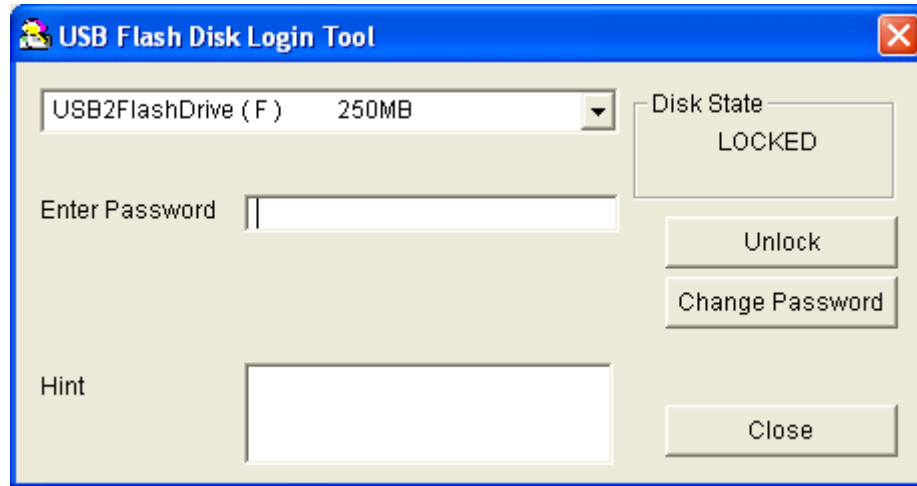
20. **USB ZIP BOOT:** USB Zip Boot function is supported only under Windows 98. After completing the format, users will find the USB flash disk now shown as **Removable Disk** in the system.
21. **USB HDD BOOT:** USB HDD Boot function is supported only under Windows 98. After completing the format, users will find the USB flash disk now shown as **Local Disk** in the system.
22. **QUICK FORMAT:** select Quick Format will erase the internal file table, which referenced by operation systems. The original data is not physically cleared.
23. **COMPLETE FORMAT:** select Complete Format will erase the internal file table and physically clear original data.

**Note:**

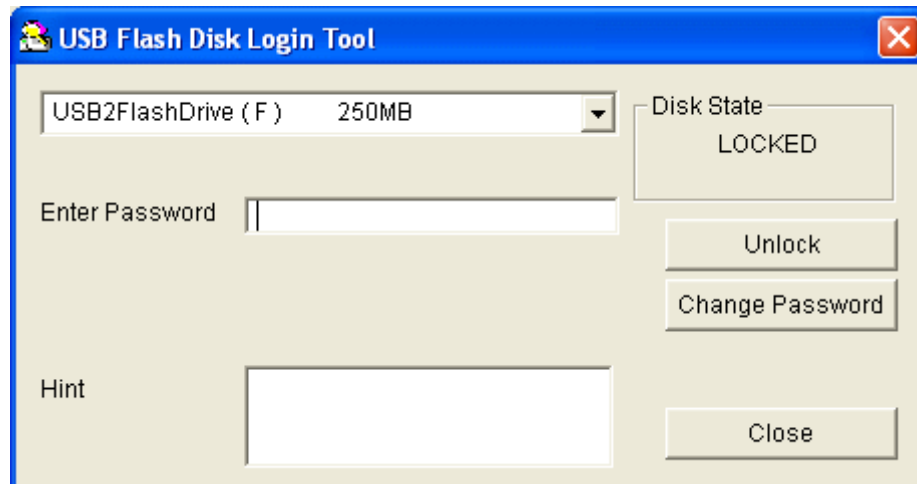
- I. For proper boot format, please make sure that the **write protect switch** is not turn on and the USB flash disk is not under **secure mode** since boot format will write data into Public Area.
- II. It is not necessary to unplug the USB flash disk after boot format. But if any improper cases happened, please unplug it then re-plug it.
- III. Boot format is workable only for one USB flash disk at one time. Please don't plug more than one USB flash disk into the system to do the boot format.



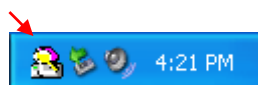
## LOCK Interface



1. **Disk State:** indicates disk mode of the USB flash disk. When the Disk State is LOCKED, users are accessing the Public Area. When the Disk State is UNLOCKED, users are accessing the Security Area.
2. **UnLock:** If the USB flash disk is in LOCKED mode, users can enter the password then click the UnLock button to switch to UNLOCKED mode to access Security Area. The display is shown as below:

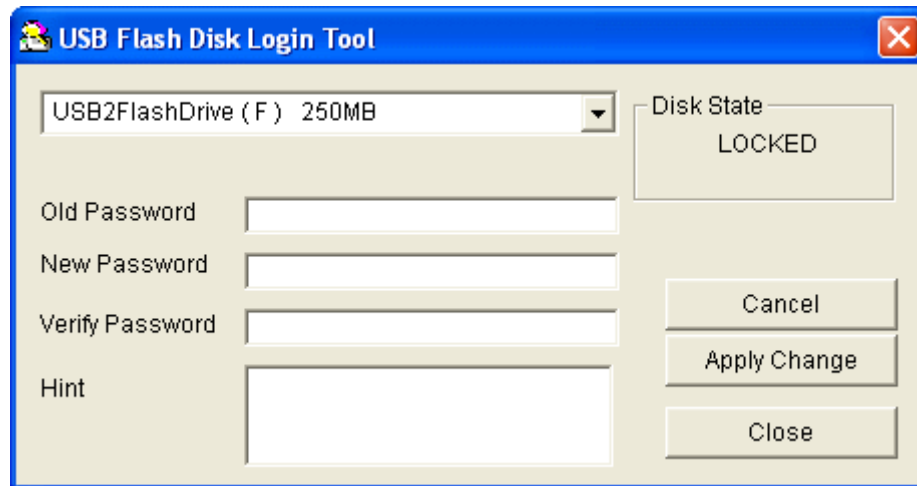


3. **Change Password:** click this button, the window for changing password will pop up. See more in 7 ~ 9.
4. **Close:** click this button to close UMSDLOG control window but not the UMSDLOG program. Users can find its icon in the menu bar shown as blow.



Users can double-clicks this icon to call the UMSDLOG control window or points to the icon and clicks the right-button of the mouse to do “Lock/UnLock”, “Change Password”, or “Exit” functions. If “Exit” function is selected, the UMSDLOG will be terminated and no longer exists inside the operation systems.

5. **Enter Password:** enter password to switch to access Security Area. If in changing password, users have to type old password in this field.
6. **Hint:** hint area to remind users the password. If in changing password, users can re-edit the hint message in this field.



7. **Cancel :** click this button to cancel the password change.
8. **Apply Change:** click this button to perform changing password on the USB flash disk.
9. **New Password:** the entry field for new password.
10. **Verify Password:** the entry field for verifying password.

**Note:**

LOCK will keep running inside the operation systems. But if users don't set Security Area when formatting the USB flash disk (please see the FORMAT section), LOCK program won't be triggered. Under such cases, users have to run the FORMAT first instead of trying to run LOCK.